



200-901^{Q&As}

Developing Applications and Automating Workflows using Cisco Platforms (DEVASC)

Pass Cisco 200-901 Exam with 100% Guarantee

Free Download Real Questions & Answers **PDF** and **VCE** file from:

<https://www.lead4pass.com/200-901.html>

100% Passing Guarantee
100% Money Back Assurance

Following Questions and Answers are all new published by Cisco Official Exam Center

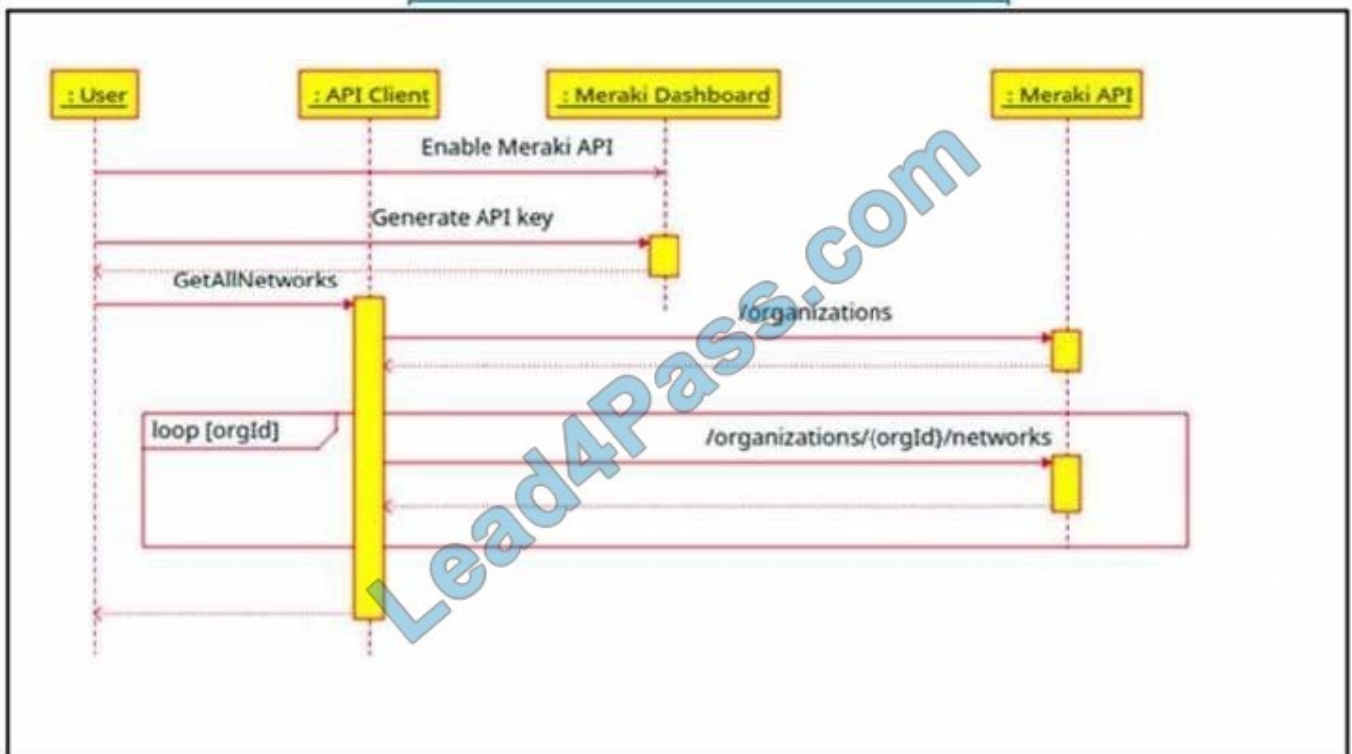
-  **Instant Download** After Purchase
-  **100% Money Back** Guarantee
-  **365 Days** Free Update
-  **800,000+** Satisfied Customers





QUESTION 1

Refer to the exhibit.



The Cisco Meraki API manages two organizations. In each organization, two independent networks are defined. How many calls to the `/organizations/(orgId)/networks` endpoint will be run parallel by the `GetAllNetwork` function of the API client?

- A. 0
- B. 1
- C. 2
- D. 4

Correct Answer: C

QUESTION 2

Which tool is used to block all traffic to the domain by using a single API call?

- A. Cisco ISE
- B. Cisco Firepower
- C. Cisco AMP



D. Cisco Umbrella

Correct Answer: B

QUESTION 3

What is the benefit of edge computing?

- A. It reduces network latency by moving processing closer to the data source.
- B. It reduces data velocity from devices or other data sources.
- C. It simplifies security as devices and processing are brought closer together.
- D. It removes the need for centralized data processing.

Correct Answer: A

Reference: <https://blogs.cisco.com/networking/time-to-get-serious-about-edge-computing>

QUESTION 4

Which two descriptions can be given to an application that is interacting with a webhook? (Choose two.)

- A. receiver
- B. transaction monitor
- C. codec
- D. processor
- E. listener

Correct Answer: AE

QUESTION 5

What is a benefit of organizing code into modules?

- A. enables the code to be broken down into layers
- B. improves collaboration of the development team
- C. makes it easier to deal with large and complex systems
- D. enables the inclusion of more programming languages in the code

Correct Answer: C



QUESTION 6

A local Docker alpine image has been created with an image ID of a391665405fe and tagged as "latest". Which command creates a running container based on the tagged image, with the container port 8080 bound to port 80 on the host?

- A. `docker build -p 8080:80 alpine:latest`
- B. `docker exec -p 8080:80 alpine:latest`
- C. `docker start -p 8080:80 alpine:latest`
- D. `docker run -p 8080:80 alpine:latest`

Correct Answer: D

QUESTION 7

What is a benefit of model-driven programmability?

- A. It addresses the static architecture of traditional networks being decentralized and complex.
- B. By modeling data, it ensures that vast quantities of data are usable for monitoring.
- C. It provides a programmatic and standards-based way of writing configurations to any network device.
- D. It simplifies management and operations by decoupling the networking hardware from its control mechanism.

Correct Answer: D

QUESTION 8

How does a synchronous API request differ from an asynchronous API request?

- A. clients receive responses with a task id for further processing
- B. clients subscribe to a webhook for operation results
- C. clients are able to access the results immediately
- D. clients poll for the status of the execution of operations

Correct Answer: C

QUESTION 9

Which two statements describe the traits of an asynchronous API call? (Choose two.)

- A. Code execution blocks or waits for the call to an API to return.



- B. A callback function typically is used to process the response from an API call.
- C. A call to an API does not block the code, but rather it allows application processing to continue.
- D. The end user can experience latency or performance lag while waiting for the API call to return.
- E. The order in which API calls return can be guaranteed.

Correct Answer: BC

Reference: <https://medium.com/codebuddies/getting-to-know-asynchronous-javascript-callbacks-promises-and-async-await-17e0673281ee>

QUESTION 10

Which API is used to obtain data about voicemail ports?

- A. Webex Teams
- B. Cisco Unified Communications Manager
- C. Finesse Gadgets
- D. Webex Devices

Correct Answer: A

QUESTION 11

In DNS, which record specifies an alias that refers to another name that ultimately resolves to an IP address?

- A. CNAME
- B. NS
- C. AAA
- D. SOA

Correct Answer: A

Reference: <https://ns1.com/resources/dns-types-records-servers-and-queries>

QUESTION 12

A developer creates a script that configured multiple Cisco IOS XE devices in a corporate infrastructure. The internal test environment is unavailable, and no maintenance window is available to test on a low-priority production environment. Which resource is used to test the code before it is applied to the production environment?

- A. Code Exchange



- B. Cisco DevNet Learning Labs
- C. Cisco DevNet Sandbox
- D. Cisco Support

Correct Answer: C

QUESTION 13

Which product provides network controller-level management features?

- A. Cisco ISE
- B. Cisco DNA Center
- C. Cisco UCS Manager
- D. Cisco NX-OS

Correct Answer: B

Reference: <https://www.cisco.com/c/en/us/products/cloud-systems-management/index.html>

QUESTION 14

DRAG DROP Refer to the exhibit.

The screenshot shows a REST API documentation page for the 'List Messages' endpoint. On the left, it describes the endpoint: 'GET /v1/messages'. It lists query parameters: 'roomId' (string, Required) for listing messages in a room by ID, and 'parentId' (string) for listing messages with a parent by ID. On the right, there is a 'Request' and 'Response' section. The 'Request' section shows a URL with various query parameters: `https://webexapis.com/v1/messages?roomId=Y2lzY29zcGFyazovL3VzL1JPT00vYmJjZWlxYWQtNDNmMS0zYjU4LTkxNDctZjE0YmlwYzRkMTU0&parentId=Y2lzY29zcGFyazovL3VzL01FU1NBR0UvZWm1ZTlzZjAtN2RhMS0xMWU5LTg2NTgtZTkzYzNiODZjZmFm&mentionedPeople=Y2lzY29zcGFyazovL3VzL1BFT1BMRS8yNDlmNzRkOS1kYjhhLTQzY2EtODk2Yi04NzllZDI0MGFjNTM&before=2016-04-21T19:01:55.966Z&beforeMessage=Y2lzY29zcGFyazovL3VzL01FU1NBR0UvOTJkYjNiZTAiNDNiZC0xMWU2LTlhZTkzZGQ1YjNkZmM1NjVj&max=100`. The 'Response' section is empty. A large 'Lead4Pass.com' watermark is overlaid on the image.

A developer needs to automatically retrieve all of the messages of a Webex room with the roomId of



HY2l2Y292cGFyazovL3Vz397748444YjU5NjAtNTk0Zi0xMmVhLTk0Mj". Using the Webex API documentation shown, drag and drop the code snippets from below onto the code to complete the Python script to list all of the messages in the room. Not all options are used.

Select and Place:

```
import requests

webex_token = "NDA2OGV...f0-4434-a696-84fee4047e0a"
room_id = "Y2l2Y292cGF...jU5NjAtNTk0Zi0xMmVhLTk0Mj"

url = "https://webexapis.com/v1/ [ ] [ ] =" + [ ]

payload = {}
headers = {
    'Authorization': 'Bearer ' + [ ]
}

response = requests.request("GET", url, headers=headers, data = payload)
print(response.text.encode('utf8'))
```

webex_token room room_id

messages? roomId messages

Correct Answer:

```
import requests

webex_token = "NDA2OGV...f0-4434-a696-84fee4047e0a"
room_id = "Y2l2Y292cGF...jU5NjAtNTk0Zi0xMmVhLTk0Mj"

url = "https://webexapis.com/v1/ messages? roomId =" + room_id

payload = {}
headers = {
    'Authorization': 'Bearer ' + webex_token
}

response = requests.request("GET", url, headers=headers, data = payload)
print(response.text.encode('utf8'))
```

[] room []

[] [] messages

**QUESTION 15**

Refer to the exhibit.

```
docker run -p 3000:5000 f877cbf2ff33
```

A process on the host wants to access the service running inside this Docker container. Which port is used to make a connection?

- A. only outbound connections between 3000 and 5000 are possible
- B. port 3000
- C. any port between 3000 and 5000
- D. port 5000

Correct Answer: B

[Latest 200-901 Dumps](#)

[200-901 Study Guide](#)

[200-901 Braindumps](#)



To Read the [Whole Q&As](#), please purchase the [Complete Version](#) from [Our website](#).

Try our product !

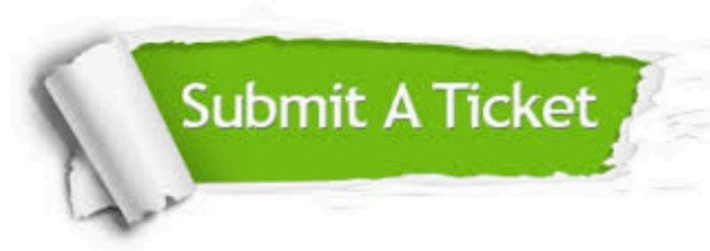
100% Guaranteed Success
100% Money Back Guarantee
365 Days Free Update
Instant Download After Purchase
24x7 Customer Support
Average 99.9% Success Rate
More than 800,000 Satisfied Customers Worldwide
Multi-Platform capabilities - [Windows](#), [Mac](#), [Android](#), [iPhone](#), [iPod](#), [iPad](#), [Kindle](#)

We provide exam PDF and VCE of Cisco, Microsoft, IBM, CompTIA, Oracle and other IT Certifications. You can view Vendor list of All Certification Exams offered:

<https://www.lead4pass.com/allproducts>

Need Help

Please provide as much detail as possible so we can best assist you.
To update a previously submitted ticket:



 <p>One Year Free Update Free update is available within One Year after your purchase. After One Year, you will get 50% discounts for updating. And we are proud to boast a 24/7 efficient Customer Support system via Email.</p>	 <p>Money Back Guarantee To ensure that you are spending on quality products, we provide 100% money back guarantee for 30 days from the date of purchase.</p>	 <p>Security & Privacy We respect customer privacy. We use McAfee's security service to provide you with utmost security for your personal information & peace of mind.</p>
---	---	--

Any charges made through this site will appear as Global Simulators Limited.
All trademarks are the property of their respective owners.
Copyright © lead4pass, All Rights Reserved.