

500-220^{Q&As}

Cisco Meraki Solutions Specialist

Pass Cisco 500-220 Exam with 100% Guarantee

Free Download Real Questions & Answers **PDF** and **VCE** file from:

<https://www.leads4pass.com/500-220.html>

100% Passing Guarantee
100% Money Back Assurance

Following Questions and Answers are all new published by Cisco
Official Exam Center

-  **Instant Download** After Purchase
-  **100% Money Back** Guarantee
-  **365 Days** Free Update
-  **800,000+** Satisfied Customers



QUESTION 1

Route table

SUBNET
 NAME
 TYPE
 SORT BY

Subnet	Name	Type	Next hop
10.115.32.0/28	Store 1532 – appliance: MGMT	Meraki VPN: VLAN	Peer: Store 1532 – appliance
10.116.32.0/28	Store 1532 – appliance: DATA	Meraki VPN: VLAN	Peer: Store 1532 – appliance
192.39.2.28/32	External	BGP	10.128.124.62
192.168.70.8/29	MSP NOC	IPSec Peer	4.99.111.99
192.168.70.0/29	MSP NOC	IPSec Peer	4.100.99.100
192.39.228.0/24	External	BGP	10.128.124.62
192.168.0.0/16	External	BGP	10.128.124.62

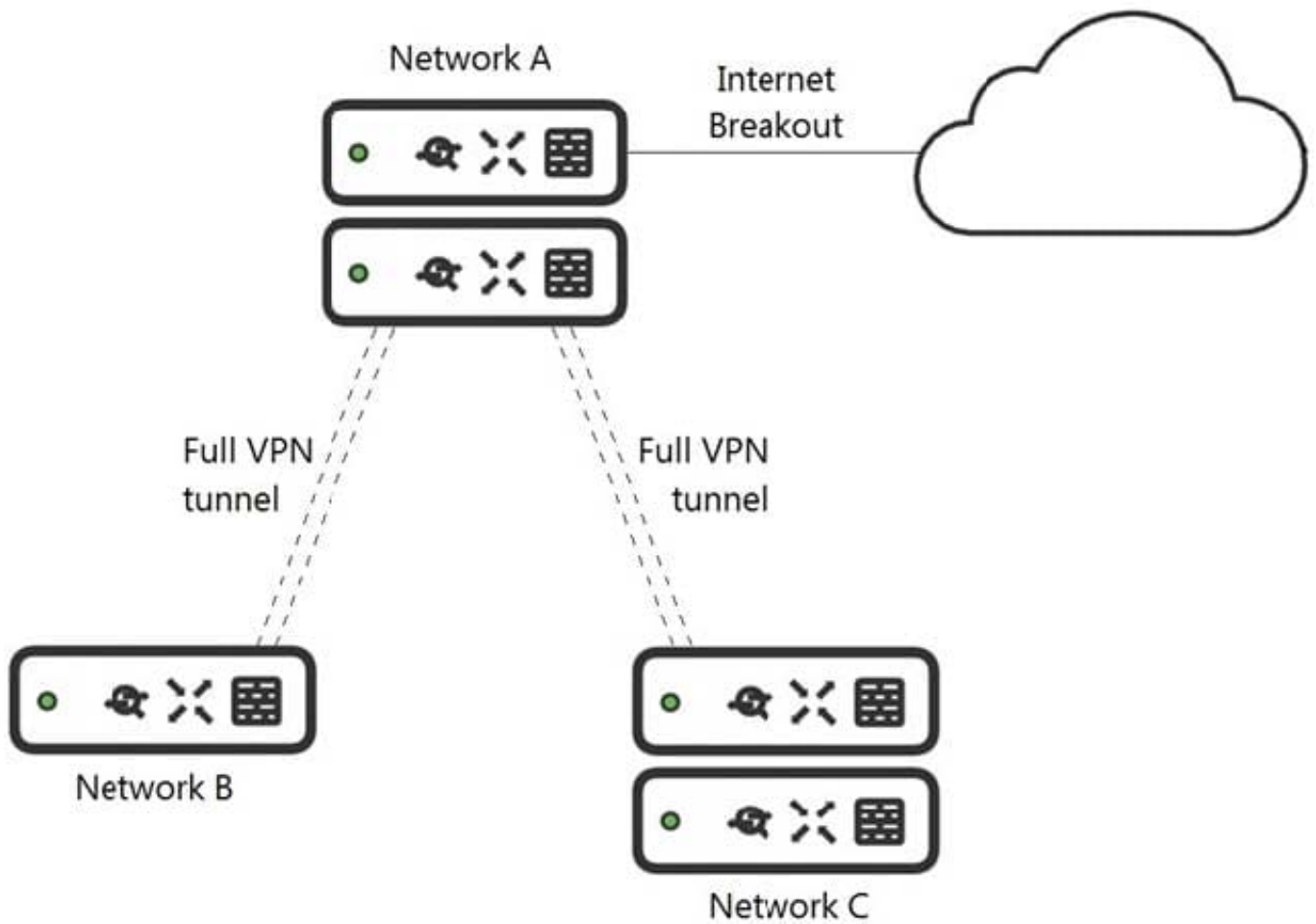
Refer to the exhibit. A packet arrives on the VPN concentrator with source IP 10.168.70.3 and destined for IP 10.116.32.4.

What is the next hop for the packet, based on this concentrator routing table?

- A. The concentrator gateway (10.128.124.62) is the next hop.
- B. Not enough detail is available to determine the next hop.
- C. The packet is stopped.
- D. The Auto VPN peer "Store 1532 ?appliance" is the next hop.

Correct Answer: B

QUESTION 2



Refer to the exhibit. What is the minimal Cisco Meraki Insight licensing requirement?

- A. A single Meraki Insight license must be configured on network A to gain Web App Health visibility on network B.
- B. A single Meraki Insight license must be configured on network B to gain Web App Health visibility on network B.
- C. A single Meraki Insight license must be configured on network A, and a single license must be configured on network B, to gain Web App Health visibility on network B.
- D. Two Meraki Insight licenses must be configured on network A to gain Web App Health visibility on network B.
- E. Two Meraki Insight licenses must be configured on network A and a single license must be configured on network B, to gain Web App Health visibility on network B.

Correct Answer: E

QUESTION 3

License information for Home

License status	OK	
License expiration ⓘ	May 20, 2029 (3593 days from now)	
MX advanced Security	Enabled	
System Manager	Enabled (paid)	
	License limit	Current device count
MS220-8P	1	1
MV	2	0
MX64	1	1
Systems Manager Agent	100	0
Wireless AP	7	1
MV-SEN	10 free	0

[Add another license](#)

Refer to the exhibit. This Dashboard organization uses Co-Termination licensing model.

What happens when an additional seven APs are claimed on this network without adding licenses?

- A. All APs immediately stop functioning.
- B. All network devices stop functioning in 30 days.
- C. One AP Immediately stops functioning.
- D. All APs stop functioning in 30 days.

Correct Answer: B

QUESTION 4

What happens to an unsupervised iOS device when the "Meraki management" profile is removed?

- A. The "Meraki management" profile is removed. All configuration profiles that Systems Manager pushed remain.
- B. The "Meraki management" profile is removed. All configuration profiles that Systems Manager pushed are also removed.
- C. The "Meraki management" profile is removed and then pushed automatically by Systems Manager.
- D. The "Meraki management" profile cannot be removed.

Correct Answer: B

QUESTION 5

SD-WAN & traffic shaping

Uplink configuration

WAN 1 4 Gbps [details](#)

WAN 2 4 Gbps [details](#)

Cellular Unlimited [details](#)

Uplink statistics	Test connectivity to	Description	Default	Actions
	8.8.8.8	Google	<input checked="" type="radio"/>	X

[Add a destination](#)

List update interval
 WAN 1
 WAN 2 [simple](#)
 Cellular

Uplink selection

Global preferences

Primary uplink

Load balancing Enabled Disabled

Flow preferences

Internet traffic There are no uplink preferences for Internet traffic configured on this network.

[Add a preference](#)

Refer to the exhibit. Which two actions are required to optimize load balancing asymmetrically with a 4:1 ratio between links? (Choose two.)

- A. Change the primary uplink to "none".
- B. Add an internet traffic preference that defines the load-balancing ratio as 4:1.
- C. Enable load balancing.
- D. Set the speed of the cellular uplink to zero.
- E. Change the assigned speeds of WAN 1 and WAN 2 so that the ratio is 4:1.

Correct Answer: CE

QUESTION 6

A red rectangular box with a white border containing the text "Recent 802.1X failure" in bold red font, with a small red downward-pointing chevron icon below it.

Refer to the exhibit. For an AP that displays this alert, which network access control method must be in use?

- A. preshared key
- B. WPA2-enterprise with my RADIUS server
- C. splash page with my RADIUS server
- D. MAC-based access control with RADIUS server

Correct Answer: A

QUESTION 7

In an organization that uses the Co-Termination licensing model, which two operations enable licenses to be applied? (Choose two.)

- A. Renew the Dashboard license.
- B. License a network.
- C. License more devices.
- D. Call Meraki support.
- E. Wait for the devices to auto-renew.

Correct Answer: AC

Reference: https://documentation.meraki.com/General_Administration/Licensing/Meraki_Co-Termination_Licensing_Overview

QUESTION 8

Which type of authentication protocol is used when using OSPF on an MX appliance?

- A. MD5
- B. certificate

C. plaintext

D. SHA-1

Correct Answer: A

Reference: https://documentation.meraki.com/MX/Site-to-site_VPN/Using_OSPF_to_Advertise_Remote_VPN_Subnets

QUESTION 9

A new application needs to be pushed to all iOS devices. Some devices report "NotNow" in the event log and do not install the application. What does the "NotNow" event indicate?

A. The application requires the most recent iOS version.

B. The device is locked with a passcode.

C. The device cannot connect to Apple servers.

D. The device cannot connect to Cisco Meraki servers.

Correct Answer: B

Reference: <https://community.meraki.com/t5/Mobile-Device-Management/Check-NotNow-Status/td-p/3887>

QUESTION 10

Which VLAN is used to source pings across the site-to-site VPN when using the MX Live tools?

A. highest VLAN ID that is configured and set to NO to use VPN

B. lowest VLAN ID that is configured and set to YES to use VPN

C. highest VLAN ID that is configured and set to YES to use VPN

D. lowest VLAN ID configured and set to NO to use VPN

Correct Answer: C

Reference:

https://documentation.meraki.com/General_Administration/Tools_and_Troubleshooting/Using_the_Ping_Live_Tool

QUESTION 11

What are two organization permission types? (Choose two.)

A. Full

B. Read-only

C. Monitor-only

D. Write

E. Write-only

Correct Answer: AB

Reference: https://documentation.meraki.com/General_Administration/Managing_Dashboard_Access/Managing_Dashboard_Administrators_and_Permissions

QUESTION 12

Which design requirement is met by implementing syslog versus SNMP?

A. when automation capabilities are needed

B. when proactive alerts for critical events must be generated

C. when organization-wide information must be collected

D. when information such as flows and client connectivity must be gathered

Correct Answer: D

Reference: https://documentation.meraki.com/General_Administration/Monitoring_and_Reporting/Meraki_Device_Reporting_-_Syslog%2C_SNMP%2C_and_API

QUESTION 13

Which information do the MXs in a High Availability pair share?

A. spanning-tree state

B. time synchronization state

C. DHCP association database

D. stateful firewall database

Correct Answer: C

QUESTION 14

DRAG DROP

Drag and drop the settings from the left into the boxes on the right to indicate if the setting will be cloned or not cloned using the Cisco Meraki MS switch cloning feature.

Select and Place:

switch management IP	Cloned
switch name	
port name	
interface type	Not Cloned
STP bridge property	

Correct Answer:

	Cloned
	Not Cloned

switch management IP
interface type
STP bridge property

switch name
port name

QUESTION 15

Uplink selection

Global preferences

Primary uplink

WAN 1 ▾

Load balancing

Enabled

Traffic will be spread across both uplinks in the proportions specified above. Management traffic to the Meraki cloud will use the primary uplink.

Disabled

All Internet traffic will use the primary uplink unless overridden by an uplink preference or if the primary uplink fails.

Active-Active AutoVPN

Enabled

Create VPN tunnels over all of the available uplinks (primary and secondary).

Disabled

Do not create VPN tunnels over the secondary uplink unless the primary uplink fails.

Flow preferences

Internet traffic

There are no uplink preferences for Internet traffic configured on this network.

[Add a preference](#)

SD-WAN policies

VPN traffic

Uplink selection policy

Use the uplink that's best for VoIP traffic.

Prefer WAN 2. Fail over if poor performance for "Conf"

[Add a preference](#)

Traffic filters

All VoIP & video conferencing

WebEx

Actions

+ ×

+ ×

Custom performance classes 

Name	Maximum latency (ms)	Maximum jitter (ms)	Maximum loss (%)	Actions
Conf	200	50	5	×

[Create a new custom performance class](#)

Refer to the exhibit. Assuming this MX has established a full tunnel with its VPN peer, how will the MX route the WebEx traffic?

- A. WebEx traffic will prefer WAN 2 as long as it meets the thresholds in the "Conf" performance class.
- B. WebEx traffic will prefer WAN 1 as it is the primary uplink.
- C. WebEx traffic will prefer WAN 2 as long as it is up.
- D. WebEx traffic will be load-balanced between both active WAN links.

Correct Answer: A

[500-220 Practice Test](#)

[500-220 Study Guide](#)

[500-220 Exam Questions](#)